



# PlenaTex BAR 80-140-180-200

**PlenaTex BAR** is a range of synthetic vapour control layers composed of a polypropylene film between two layers of polypropylene nonwoven fabric, ultrasonically bonded together. This production technique ensures structural continuity, product uniformity, and the absence of adhesives or additional chemical agents.

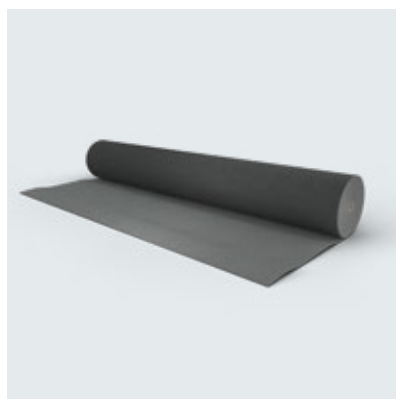
PlenaTex Bar 80 is designed to provide an optimal balance between mechanical strength, dimensional stability, and vapour control capacity.

**PlenaTex Bar 140, 180 and 200** offer enhanced mechanical resistance and feature a specific anti-slip, abrasion-resistant and UV-resistant surface treatment, improving both durability and on-site safety during installation, even in demanding conditions.

All models in the PlenaTex Bar range are rated W1 according to EN 13859, ensuring the highest level of water resistance required by the standard.



## Features



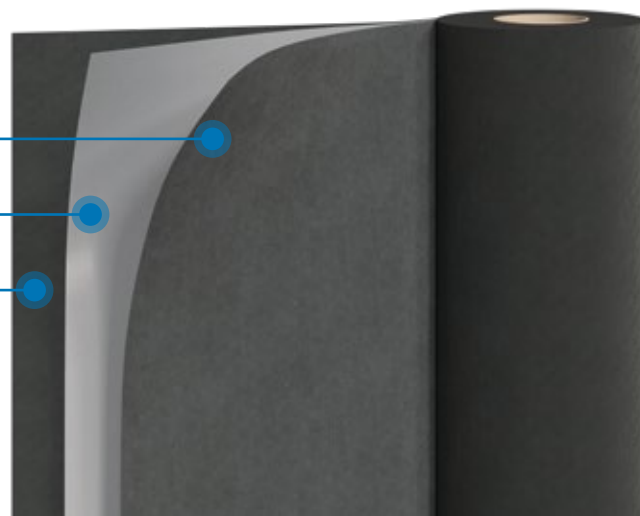
Product	Rolls for Pallets 80x120	Roll Length	Roll Width	Roll Weight	SD	Tensile Strength	Nail Tear Resistance	UV Stability
<b>PLENATEX BAR 80</b>	56	50 m	1,5 m	6 kg	5 m	MD: 160±15% N/5 cm CD: 120±15% N/5 cm	MD: 80±15% N CD: 80±15% N Classe R2	6 months
<b>PLENATEX BAR140</b>	30	50 m	1,5 m	11 kg	5,5 m	MD: 340±15% N/5 cm CD: 230±15% N/5 cm Classe R2	MD: 165±15% N CD: 200±15% N Classe R2	6 months
<b>PLENATEX BAR 180</b>	25	50 m	1,5 m	14 kg	5,5 m	MD: 380±15% N/5 cm CD: 270±15% N/5 cm Classe R2	MD: 190±15% N CD: 230±15% N Classe R2	6 months
<b>PLENATEX BAR 200</b>	20	50 m	1,5 m	15 kg	5,5 m	MD: 410±15% N/5 cm CD: 310±15% N/5 cm Classe R2	MD: 200±15% N CD: 240±15% N Classe R2	6 months

## Composition

PP Nonwoven Fabric

PP Film

PP Nonwoven Fabric



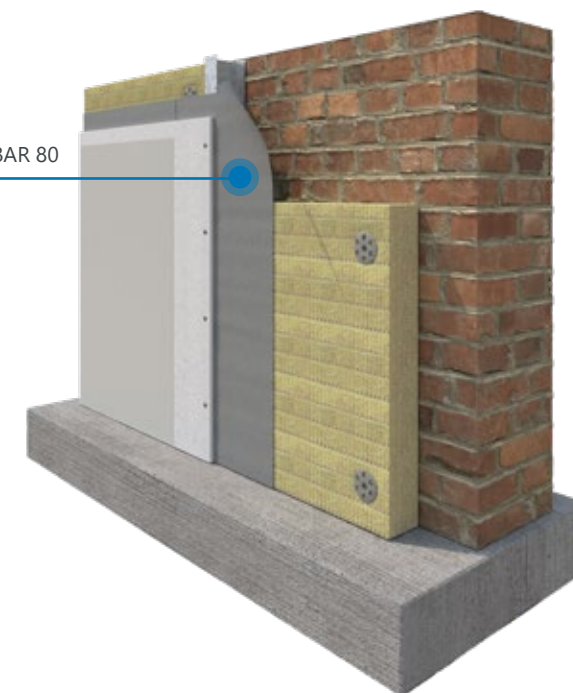
## Application

The **PlenaTex Bar** range is designed to meet a variety of application needs in both wall and roof assemblies, supporting the correct hygrothermal balance of the building envelope and long-term protection of the insulation layers.

**PlenaTex BAR 80** is ideal as a vapour control layer for interior walls, in both dry and plastered construction systems, where it is installed on the warm side of the insulation, adjacent to the heated space. It is especially suitable for partition walls between areas with different hygrothermal conditions, in timber or lightweight steel frame structures, in energy renovation projects, or wherever it is necessary to limit vapour diffusion into the wall assembly.

In this context, the membrane helps prevent interstitial condensation, protecting the insulation and improving the overall durability and efficiency of the wall system.

PlenaTex BAR 80



PlenaTex BAR 140-180-200

**PlenaTex BAR 140, 180 e 200** are specifically developed for discontinuous pitched roofs, where they are installed directly on the first timber deck, beneath the insulation layer.

They are particularly suitable for ventilated roofs with double decking and insulation systems made of mineral wool, PIR, or wood fibre.

In these configurations, they effectively regulate vapour diffusion from the interior to the exterior, preventing condensation and preserving the thermal performance of the insulation over time.

In all installation scenarios, **PlenaTex Bar** products ensure reliability, protection, and durability, supporting the overall performance of the building envelope.

## Accessories

accessory details p. 58-59

Product	Length	Width	Adhesive Type
<b>PLENAFLEX BUTYL TAPE</b>	35 m	20 mm	butyl rubber
<b>PLENA BARRIER TAPE</b>	25 m	60 mm	butyl rubber

Product Catalogue