



PlenaTex PE

PlenaTex PE is a vapour control membrane composed of a layer of polypropylene nonwoven fabric bonded to a continuous layer of extruded polyethylene film.

This material combination provides high mechanical strength, waterproofing and long-term durability.

The structure offers a well-balanced combination of thickness, weight, and resistance, ensuring dimensional stability both during installation and over time.

The surface finish improves adhesion within multilayer systems, facilitating integration with other components of the building envelope. The membrane complies with standards EN 13859-1 and EN 13859-2.



Features



Rolls for Pallets 80x120	Roll Length	Roll Width	Roll Weight	SD	Tensile Strength	Nail Tear Resistance	UV Stability
20	50 m	1,5 m	10 kg	60 m	MD: 350±15% N/5cm CD: 120±15% N/5cm Classe R1	MD: 120±15% N CD: 130±15% N Classe R1	3 months

Composition

Extruded PE Film

PP Nonwoven Fabric



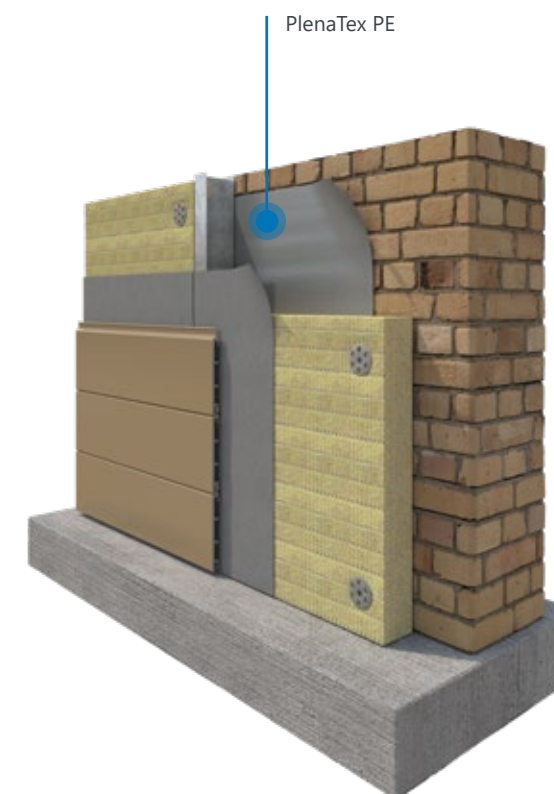
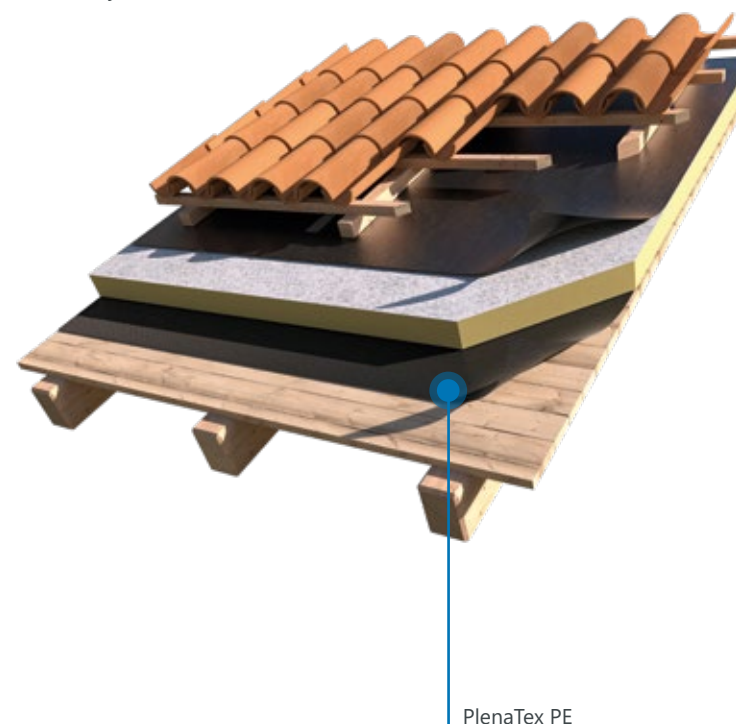
Application

PlenaTex PE is designed for use as a vapour control layer in discontinuous pitched roofs, where it is placed directly over the first timber deck, underneath the insulation layer.

It is ideal for insulated assemblies using materials such as mineral wool, polyurethane, or wood fibre, where vapour diffusion from the inside to the outside must be carefully managed.



PlenaTex PE protects the thermal insulation by preventing interstitial condensation and ensuring proper hygrothermal balance of the building envelope.

It is also suitable for use in external wall assemblies, where it is installed on the warm side of the structure, in direct contact with the insulation. In this application, it limits vapour migration into the wall layers, contributing to the durability and efficiency of the wall system.



Accessories

accessory details p. 58-59

Product	Length	Width	Adhesive Type
 PLENAFLEX BUTYL TAPE	35 m	20 mm	butyl rubber
 PLENA BARRIER TAPE	25 m	60 mm	butyl rubber