



Stetra Foil

Stetra Foil is a high-performance waterproof vapour control membrane made of an extruded polymer sheet laminated on both sides with polypropylene nonwoven fabric.

Its multilayer configuration ensures high tear strength and excellent bonding with tile adhesives.

Thanks to its flexible yet strong structure, Stetra Foil can absorb micro-deformations in the substrate, preventing cracks and detachment in ceramic coverings, even in humid or mechanically stressed environments.



Features



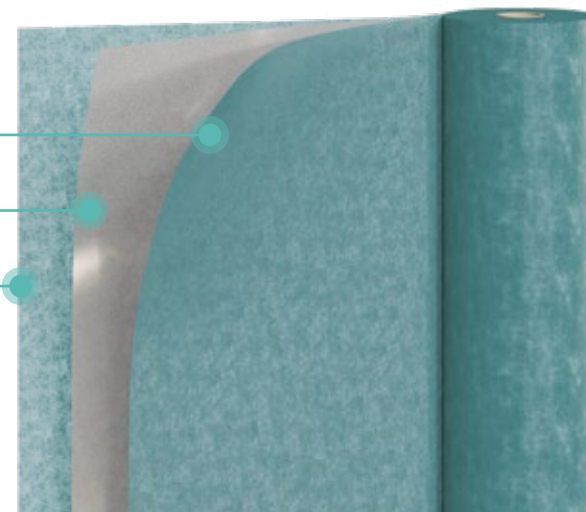
Roll Length	Roll Width	Roll Weight	Thickness	Tensile Strength	Water Resistance	Tear Resistance
30 m	1 m	7 kg	0,44 mm	MD: 500±15% N/5cm CD: 160±15% N/5cm	waterproofing	-

Composition

PP Nonwoven Fabric

Polymer Sheet

PP Nonwoven Fabric

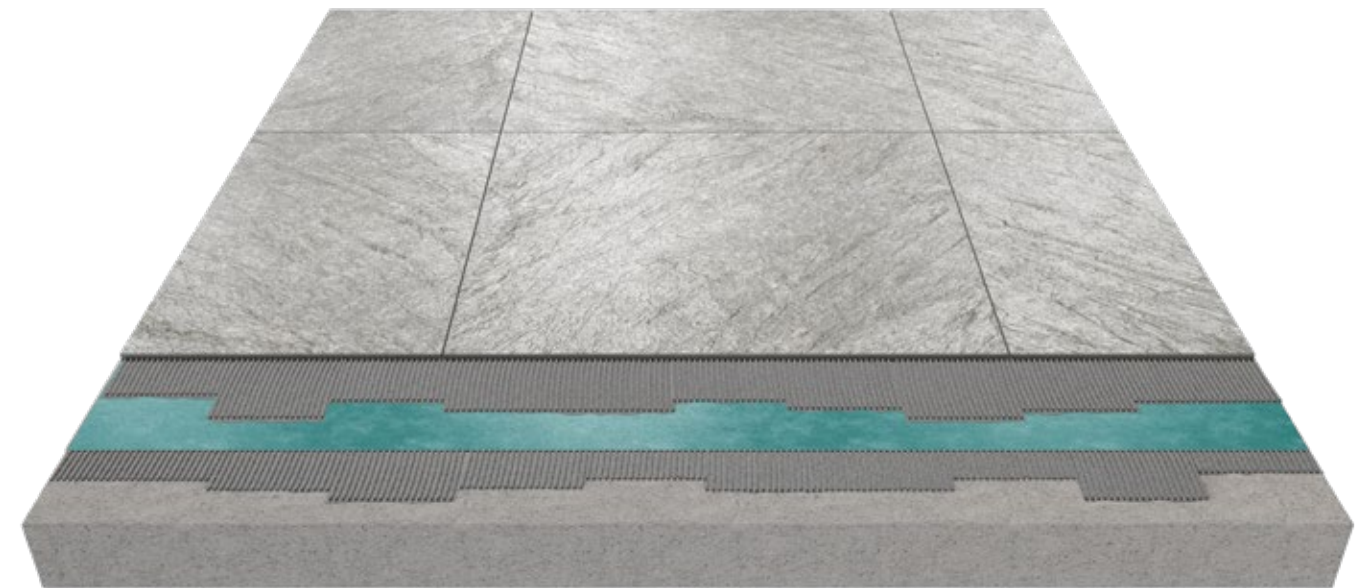


Application

Stetra Foil is designed as a waterproofing membrane under tiles in wet areas, such as:

- Bathrooms, showers, and spas
- Kitchens and laundry rooms
- Protected outdoor areas (e.g., terraces)

The membrane contributes to system waterproofing and protects the substrate from water ingress, enhancing the durability of the assembly.



Stetra System

Complete Waterproofing System for Wet Areas.

System Components: Stetra, Stetra Foil, Stetra Board, Stetra Band and Preformed Corners.

